

# Jay Ben Markson

The Luedtke Agency, LLC

4528 21st St. 2nd Floor, LIC, NY 11101

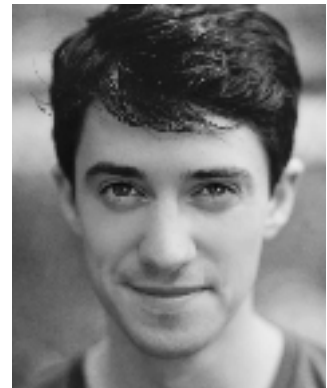
Tel: 212-765-9564 \* Fax: 212-765-9582

Member:  
Actor's Equity

Height: 5'8"  
Weight: 130

Hair: dark brown  
Eyes: hazel/green

[www.jaybenmarkson.com](http://www.jaybenmarkson.com)



## THEATER

### Regional (selected)

<i>Our Town</i>	Joe Crowell, Jr.	Huntington Theatre Co., dir. <i>David Cromer</i>
<i>The Crucible</i>	Ezekiel Cheever	Cleveland Play House, dir. <i>Laura Kepley</i>
<i>Luna Gale</i>	Cliff (u/s)	Cleveland Play House, dir. <i>Austin Pendleton</i>
<i>The Mousetrap</i>	Christopher Wren	Cape Playhouse, dir. <i>Pamela Hunt</i>
<i>Mrs. Whitney</i>	Fin Whitney	Merrimack Repertory Theater, dir. <i>Kyle Fabel</i>
<i>Utopia, MN</i> (workshop)	Athel	CPH, dir. <i>Pironne Yousefzadeh</i> , wr. <i>Meg Miroshnik</i>
<i>Julius Caesar</i>	Cassius	MaineStage Shakespeare, dir. <i>Chiara Klein</i>
<i>As You Like It</i>	Touchstone	MaineStage Shakespeare, dir. <i>Natalie Holmes</i>
<i>Romeo and Juliet</i>	Mercutio	MaineStage Shakespeare, dir. <i>James A. Bond</i>
<i>A Midsummer Night's Dream</i>	Puck	MaineStage Shakespeare, dir. <i>Chiara Klein</i>

### New York

<i>Belfast Kind</i> (reading)	Adam Asher	Jewish Plays Project, dir. <i>David Winitsky</i>
<i>Go Get the Axe</i>	Tommy Tanner	FIG Productions, dir. <i>Richard Aven</i>
<i>Proof</i> (reading)	Hal	dir. <i>Christopher Erlendson</i>
<i>ShakesBEER</i>	Aguecheek/Elbow	New York Shakespeare Exchange

### Graduate

<i>Two Gentlemen of Verona</i>	Valentine	CWRU/CPH MFA, dir. <i>Paul Mullins</i>
<i>The Philadelphia Story</i>	Sandy	CWRU/CPH MFA, dir. <i>Jerrold Scott</i>
<i>Three Sisters</i>	Kulygin	CWRU/CPH MFA, dir. <i>Ron Wilson</i>
<i>Too True to Be Good</i>	The Microbe/The Elder	CWRU/CPH MFA, dir. <i>Don Carrier</i>

## FILM

<i>The Audience</i> (feature)	Greg/Grace (lead)	Rory Gory Pictures, dir. <i>Rory Gory</i>
<i>Our Way Out</i> (short)	Jake	wr./dir. <i>Kate Brown</i>

## TRAINING

MFA Acting:	Case Western Reserve University/Cleveland Play House (2016)
BA Theater:	Dartmouth College
International Experience:	London Academy of Music and Dramatic Arts
Workshops:	Geoff Bullen (Shakespeare), Joan Ellison (singing), Jane Gabbert (VO/commercial)

## RELATED WORK

<i>Associate Artistic Director</i>	MaineStage Shakespeare	April '12 – April '16
<i>Literary Intern</i>	New York Theater Workshop	Winter '09

## SKILLS AND KNOWLEDGE

Dialect (RP, Scottish, Irish, American Southern, Australian, Boston), basic guitar, trained rapier/dagger combatant, advanced skier, driver's license, appeared on episode #6344 of *Jeopardy!*